

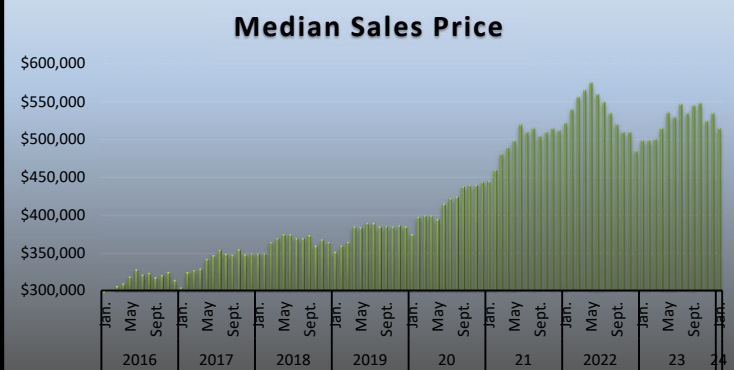
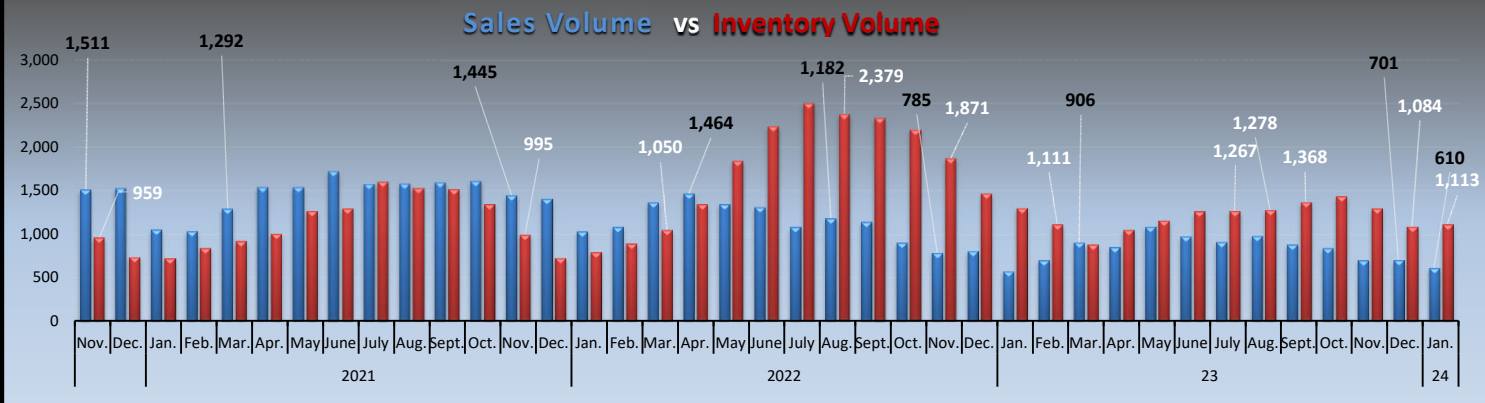
# MLS STATISTICS for January 2024

Data for Sacramento County and the City of West Sacramento



## SINGLE FAMILY HOME RESALES

Monthly Statistics	Current Month	% of Total Sales	Last Month	Change	% of Total Sales	Last Year	% of Total Sales	Change
Listings Published this Month	1,010		567	78.1%		806		25.3%
Active Listing Inventory †	1,113		1,084	2.7%		1,300		-14.4%
Pending Sales This Month*	899		827	8.7%		833		7.9%
Number of REO Sales	3	0.5%	1	200%	0.1%	5	0.9%	N/A
Number of Short Sales	0	0.0%	1	N/A	0.1%	3	0.5%	N/A
Equity Sales	607	99.5%	699	-13.2%	99.7%	564	98.6%	7.6%
Other (non-REO/-Short Sale/-Equi)	0	0.0%	0	0%	0.0%	0	0.0%	N/A
Total Number of Closed Escrows	610	100%	701	-13.0%	100%	572	100.0%	6.6%
Months Inventory	1.8 Months		1.5 Months	20.0%		2.3 Months		-21.7%
Dollar Value of Closed Escrows	\$345,389,043		\$395,423,471	-12.7%		\$308,110,654		12.1%
Median	\$515,000		\$535,000	-3.7%		\$499,000		3.2%
Mean	\$566,212		\$564,085	0.4%		\$538,655		5.1%
<b>Year-to-Date Statistics</b>	<b>1/01/24 to 1/31/24</b>		<b>1/01/24 to 1/31/24</b>			<b>1/1/2023</b>		<b>Change</b>
	SAR monthly data, compiled		MetroList YTD data			12/31/2023		
Number of Closed Escrows	610		610			572		6.6%
Dollar Value of Closed Escrows	\$345,389,043		\$345,389,043			\$308,110,654		12.1%
Median	\$515,000		\$515,000			\$499,000		3.2%
Mean	\$566,212		\$566,212			\$538,655		5.1%



**SACRAMENTO**  
ASSOCIATION OF REALTORS®

**Jenny Escrow**  
Realtor®

**SAR Member Benefit\***  
You could advertise here!  
Contact [tony@sacrealtor.org](mailto:tony@sacrealtor.org)  
for details.

\*must be current SAR Member in good standing

† includes: Active, Contingent - Show, Contingent - No Show listings  
 \* The method for retrieving Pending Sales from MetroList® was updated for April 2019. Pending sales are now counted at a single point in time at the beginning of the month rather than by entering the date range of the month in question. This new method will now include any listings that have the status of "pending" in MetroList®.

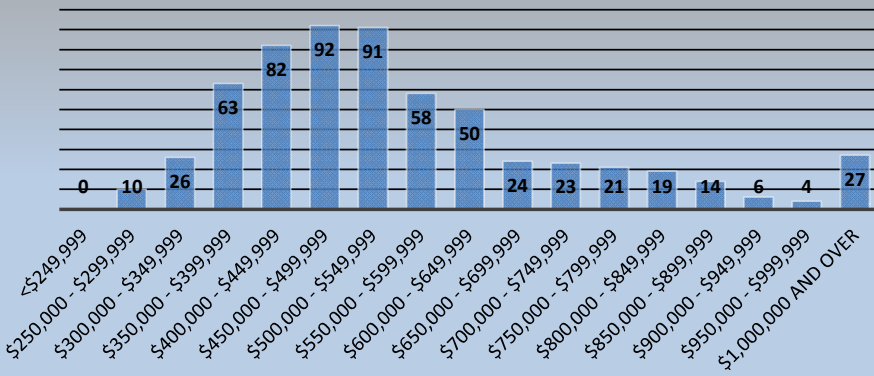
# MLS STATISTICS for January 2024

Data for Sacramento County and the City of West Sacramento

## BREAKDOWN OF SALES BY PRICE

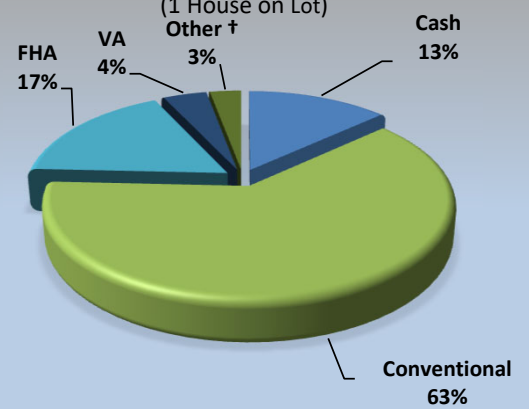
### 1 House on Lot

Total: 610

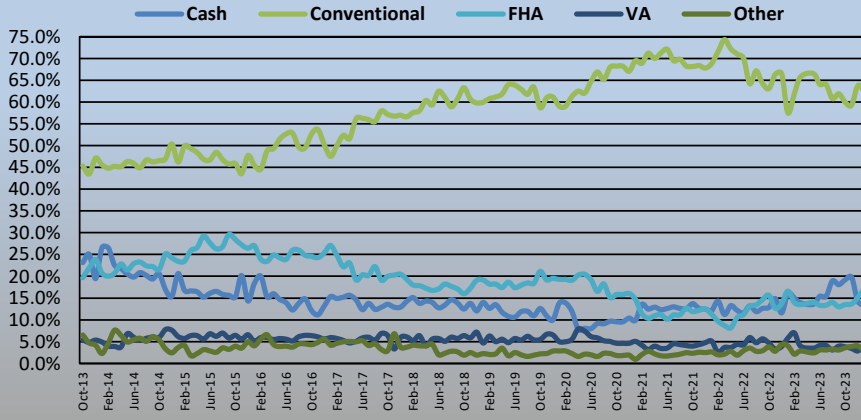


## Type of Financing/Days on Market

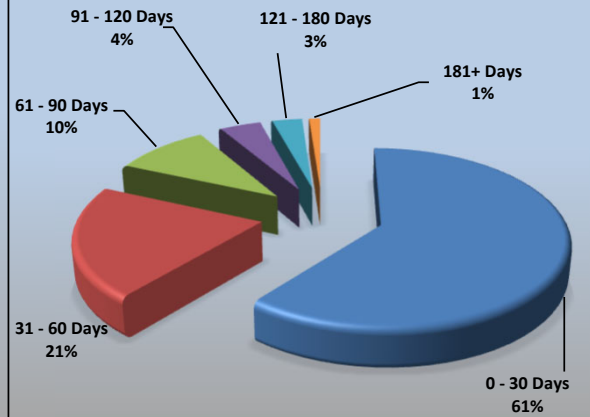
### TYPE OF FINANCING (1 House on Lot)



### Types of Financing (% of Sales)



### DAYS ON MARKET (1 House on Lot)



Type of Financing (Single Family Home only) Financing Method	Current Month		Previous Month		LENGTH OF TIME ON MARKET				
	# of Units	% of Total	# of Units	% of Total	% of Total				
					(Single Family Only) Days on Market	# of Units	Current Month	Last 4 Months	Last 12 Months
Cash	81	13.3%	100	14.3%	0 - 30	372	61.0%	70.2%	74.1%
Conventional	381	62.5%	447	63.8%	31 - 60	126	20.7%	17.6%	13.4%
FHA	105	17.2%	106	15.1%	61 - 90	60	9.8%	7.2%	5.6%
VA	25	4.1%	20	2.9%	91 - 120	26	4.3%	2.9%	3.0%
Other †	18	3.0%	28	4.0%	121 - 180	19	3.1%	1.6%	2.6%
<b>Total</b>	<b>610</b>	<b>100.0%</b>	<b>701</b>	<b>100.0%</b>	<b>181+</b>	<b>7</b>	<b>1.1%</b>	<b>0.5%</b>	<b>1.3%</b>
					<b>Total</b>	<b>610</b>	<b>100.0%</b>	<b>100.0%</b>	<b>100.0%</b>

† includes: cal vet, contract of sale, creative, farm home loan, owner financing.

	Current	Last Month
Median DOM:	21	19
Average DOM:	35	30
Average Price/Square Foot:	\$332.1	\$331.2

This representation is based in whole or in part on data supplied by MetroList. MetroList does not guarantee, nor is it in any way responsible for, its accuracy. Data maintained by MetroList does not reflect all real estate activity in the market. All information provided is deemed reliable, but it is not guaranteed and should be independently verified. For the most current statistical information, visit <https://www.sacrealtor.org/consumers/housing-statistics>.

Based on Multiple Listing Service data from MetroList® | 2024 SAR

Compiled monthly by Tony Vicari, Director of Communications | Sacramento Association of REALTORS® | www.sacrealtor.org | 916.437.1205