

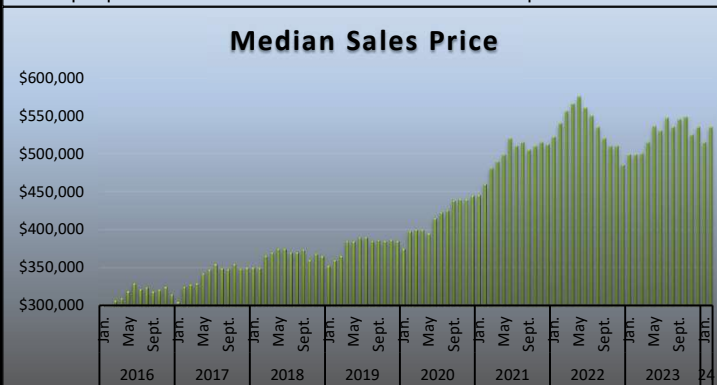
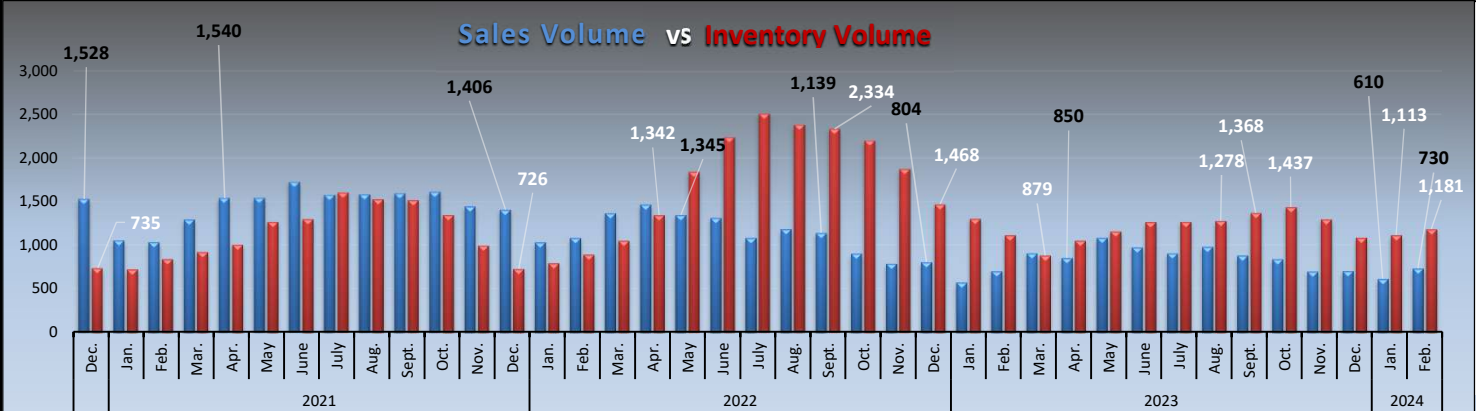
MLS STATISTICS for February 2024

Data for Sacramento County and the City of West Sacramento



SINGLE FAMILY HOME RESALES

Monthly Statistics	Current Month	% of Total Sales	Last Month	Change	% of Total Sales	Last Year	% of Total Sales	Change
Listings Published this Month	1,006		1,010	-0.4%		898		12.0%
Active Listing Inventory †	1,181		1,113	6.1%		1,111		6.3%
Pending Sales This Month*	972		899	8.1%		991		-1.9%
Number of REO Sales	3	0.4%	3	0%	0.5%	3	0.4%	N/A
Number of Short Sales	2	0.3%	0	N/A	0.0%	2	0.3%	N/A
Equity Sales	725	99.3%	607	19.4%	99.5%	694	99.3%	4.5%
Other (non-REO/-Short Sale/-Equ)	0	0.0%	0	0%	0.0%	0	0.0%	N/A
Total Number of Closed Escrows	730	100%	610	19.7%	100%	699	100.0%	4.4%
Months Inventory	1.6 Months		1.8 Months	-11.1%		1.6 Months		0.0%
Dollar Value of Closed Escrows	\$432,787,451		\$345,389,043	25.3%		\$369,683,129		17.1%
Median	\$535,000		\$515,000	3.9%		\$499,000		7.2%
Mean	\$592,860		\$566,212	4.7%		\$528,874		12.1%
Year-to-Date Statistics	1/01/24 to 2/29/24		1/01/24 to 2/29/24			1/1/2023		
	SAR monthly data, compiled		MetroList YTD data			2/28/2023		Change
Number of Closed Escrows	1,340		1,364			1,271		5.4%
Dollar Value of Closed Escrows	\$778,176,494		\$793,985,343			\$677,793,783		14.8%
Median	\$525,500		\$525,500			\$499,000		5.3%
Mean	\$580,729		\$582,101			\$533,276		8.9%



Jenny Escrow
Realtor®

SAR Member Benefit*
You could advertise [here!](#)
Contact tony@sacrealtor.org
for details.

*must be current SAR Member in good standing

† includes: Active, Contingent - Show, Contingent - No Show listings
 * The method for retrieving Pending Sales from MetroList® was updated for April 2019. Pending sales are now counted at a single point in time at the beginning of the month rather than by entering the date range of the month in question. This new method will now include any listings that have the status of "pending" in MetroList®.

MLS STATISTICS for February 2024

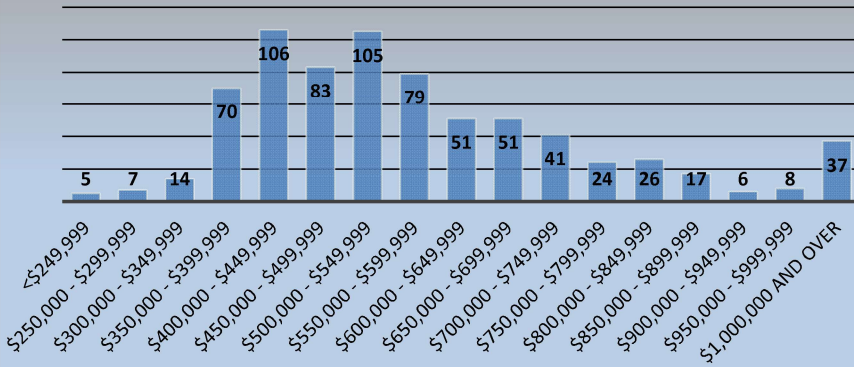
Data for Sacramento County and the City of West Sacramento

BREAKDOWN OF SALES BY PRICE

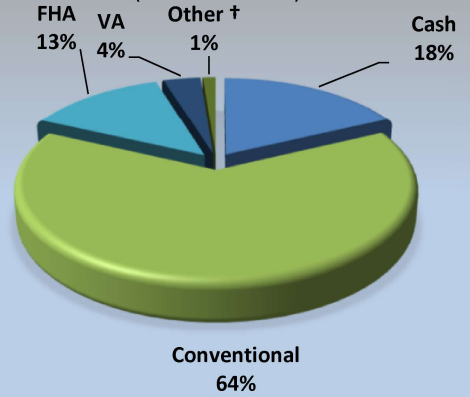
Type of Financing/Days on Market

1 House on Lot

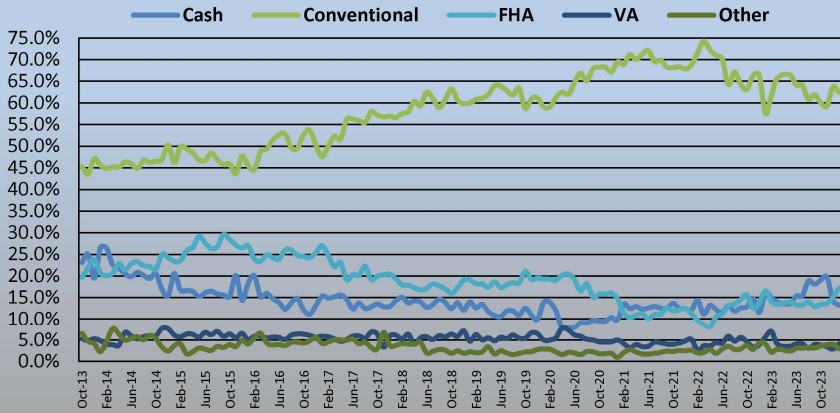
Total: 730



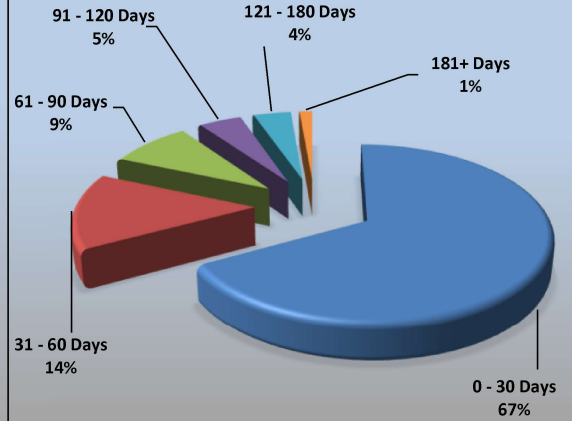
TYPE OF FINANCING (1 House on Lot)



Types of Financing (% of Sales)



DAYS ON MARKET (1 House on Lot)



Type of Financing	Current Month		Previous Month		LENGTH OF TIME ON MARKET				
(Single Family Home only) Financing Method	# of Units	% of Total	# of Units	% of Total	(Single Family Only) Days on Market	# of Units	% of Total		
							Current Month	Last 4 Months	Last 12 Months
Cash	131	17.9%	81	13.3%	0 - 30	490	67.1%	67.1%	74.9%
Conventional	467	64.0%	381	62.5%	31 - 60	105	14.4%	18.0%	13.3%
FHA	97	13.3%	105	17.2%	61 - 90	63	8.6%	8.1%	5.3%
VA	26	3.6%	25	4.1%	91 - 120	33	4.5%	3.6%	2.8%
Other †	9	1.2%	18	3.0%	121 - 180	29	4.0%	2.5%	2.4%
Total	730	100.0%	610	100.0%	181+	10	1.4%	0.7%	1.2%
					Total	730	100.0%	100.0%	100.0%

† includes: cal vet, contract of sale, creative, farm home loan, owner financing.

	Current	Last Month
Median DOM:	11	21
Average DOM:	33	35
Average Price/Square Foot:	\$342.6	\$332.1

This representation is based in whole or in part on data supplied by MetroList. MetroList does not guarantee, nor is it in any way responsible for, its accuracy. Data maintained by MetroList does not reflect all real estate activity in the market. All information provided is deemed reliable, but it is not guaranteed and should be independently verified. For the most current statistical information, visit <https://www.sacrealtor.org/consumers/housing-statistics>.

Based on Multiple Listing Service data from MetroList® | 2024 SAR

Compiled monthly by Tony Vicari, Director of Communications | Sacramento Association of REALTORS® | www.sacrealtor.org | 916.437.1205