

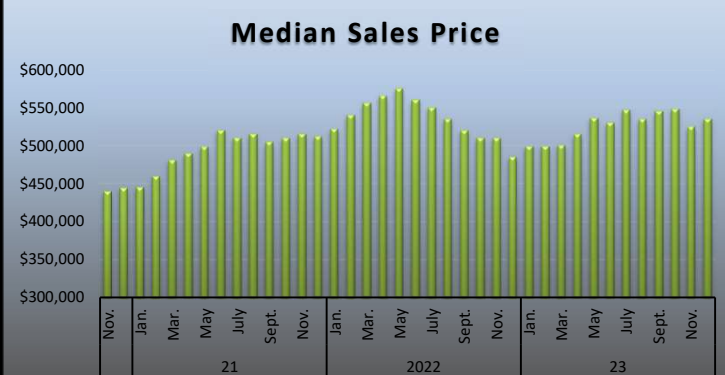
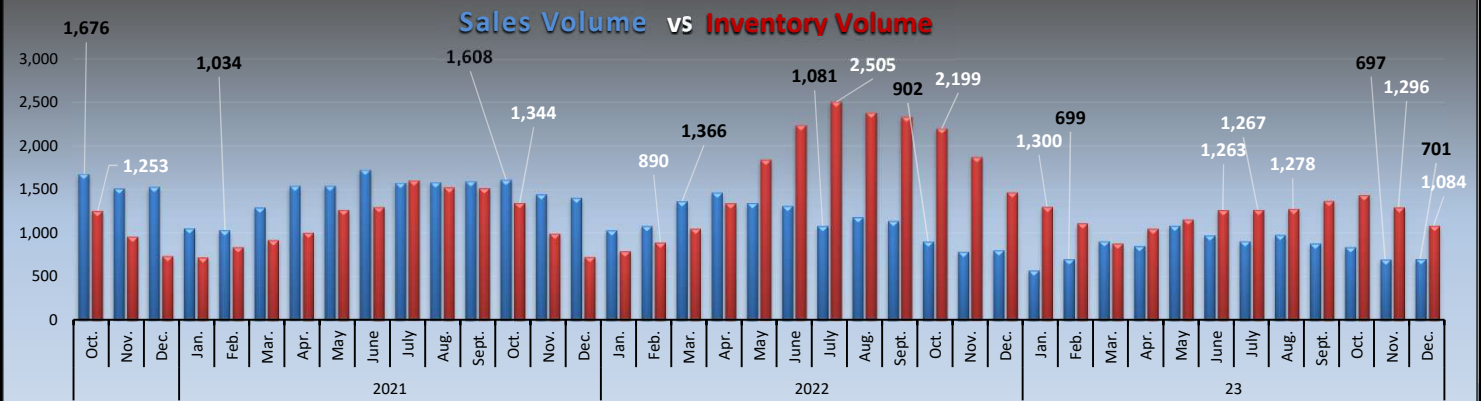
MLS STATISTICS for December 2023

Data for Sacramento County and the City of West Sacramento



SINGLE FAMILY HOME RESALES

Monthly Statistics	Current Month	% of Total Sales	Last Month	Change	% of Total Sales	Last Year	% of Total Sales	Change
Listings Published this Month	567		887	-36.1%		626		-9.4%
Active Listing Inventory †	1,084		1,296	-16.4%		1,468		-26.2%
Pending Sales This Month*	827		855	-3.3%		665		24.4%
Number of REO Sales	1	0.1%	3	-67%	0.4%	5	0.6%	N/A
Number of Short Sales	1	0.1%	1	N/A	0.1%	3	0.4%	N/A
Equity Sales	699	99.7%	693	0.9%	99.4%	796	99.0%	-12.2%
Other (non-REO/-Short Sale/-Equ)	0	0.0%	0	0%	0.0%	0	0.0%	N/A
Total Number of Closed Escrows	701	100%	697	0.6%	100%	804	100.0%	-12.8%
Months Inventory	1.5 Months		1.9 Months	-21.1%		1.8 Months		-16.7%
Dollar Value of Closed Escrows	\$395,423,471		\$392,023,734	0.9%		\$428,825,482		-7.8%
Median	\$535,000		\$525,000	1.9%		\$485,000		10.3%
Mean	\$564,085		\$562,444	0.3%		\$533,365		5.8%
Year-to-Date Statistics	1/01/22 to 12/31/23		1/01/22 to 12/31/23			1/1/2022		
	SAR monthly data, compiled		MetroList YTD data			12/31/2022		Change
Number of Closed Escrows	10,086		10,312			13,490		-25.2%
Dollar Value of Closed Escrows	\$5,856,764,214		\$5,990,127,570			\$7,978,869,291		-26.6%
Median	\$529,000		\$529,000			\$540,000		-2.0%
Mean	\$580,683		\$580,889			\$591,465		-1.8%



Jenny Escrow
Realtor®

SAR Member Benefit*
You could advertise here!
Contact tony@sacrealtor.org
for details.

*must be current SAR Member in good standing

† includes: Active, Contingent - Show, Contingent - No Show listings
 * The method for retrieving Pending Sales from MetroList® was updated for April 2019. Pending sales are now counted at a single point in time at the beginning of the month rather than by entering the date range of the month in question. This new method will now include any listings that have the status of "pending" in MetroList®.

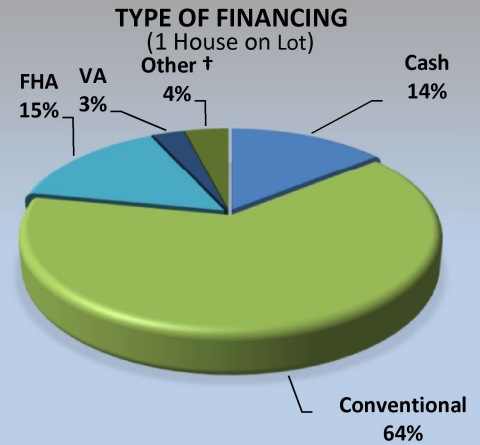
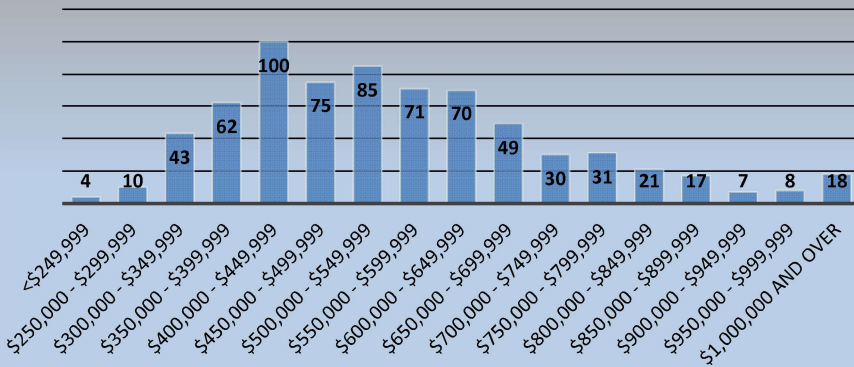
MLS STATISTICS for December 2023

Data for Sacramento County and the City of West Sacramento

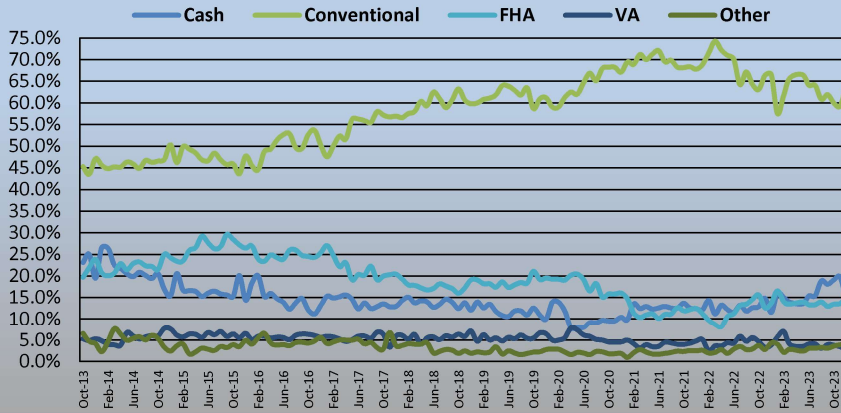
BREAKDOWN OF SALES BY PRICE

Type of Financing/Days on Market

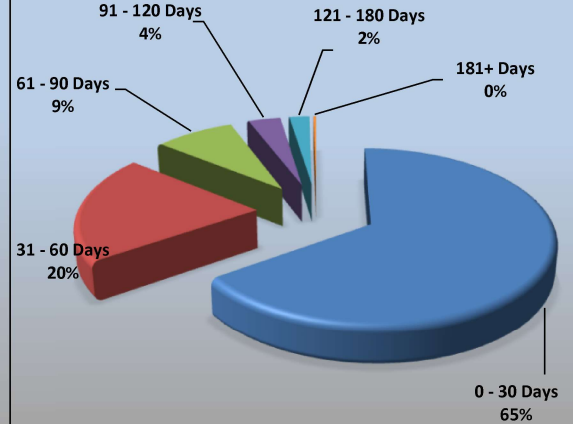
1 House on Lot Total: 701



Types of Financing (% of Sales)



DAYS ON MARKET (1 House on Lot)



Type of Financing	Current Month		Previous Month		LENGTH OF TIME ON MARKET				
	# of Units	% of Total	# of Units	% of Total	(Single Family Only) Days on Market	# of Units	% of Total		
(Single Family Home only) Financing Method							Current Month	Last 4 Months	Last 12 Months
Cash	100	14.3%	138	19.8%	0 - 30	458	65.3%	74.3%	73.6%
Conventional	447	63.8%	413	59.3%	31 - 60	143	20.4%	15.8%	13.4%
FHA	106	15.1%	95	13.6%	61 - 90	59	8.4%	5.7%	5.7%
VA	20	2.9%	24	3.4%	91 - 120	24	3.4%	2.5%	3.2%
Other †	28	4.0%	27	3.9%	121 - 180	15	2.1%	1.3%	2.8%
Total	701	100.0%	697	100.0%	181+	2	0.3%	0.5%	1.3%
					Total	701	100.0%	100.0%	100.0%

† includes: cal vet, contract of sale, creative, farm home loan, owner financing.

	Current	Last Month
Median DOM:	19	14
Average DOM:	30	24
Average Price/Square Foot:	\$331.2	\$337.2

This representation is based in whole or in part on data supplied by MetroList. MetroList does not guarantee, nor is it in any way responsible for, its accuracy. Data maintained by MetroList does not reflect all real estate activity in the market. All information provided is deemed reliable, but it is not guaranteed and should be independently verified. For the most current statistical information, visit <https://www.sacrealtor.org/consumers/housing-statistics>.

Based on Multiple Listing Service data from MetroList® | 2024 SAR

Compiled monthly by Tony Vicari, Director of Communications | Sacramento Association of REALTORS® | www.sacrealtor.org | 916.437.1205